

2-Gang InformaCast® Access Control Intercom



Description

InformaCast®-enabled weatherproof outdoor IP intercom designed and manufactured in the USA. Dual registration capability enables users to simultaneously access both the InformaCast Advanced Notification System and a SIP PBX using only one IP endpoint. With the highest quality two-way audio in the industry, it is perfect for use in schools and universities, warehouses, secure locations, parking garages and retail locations. Using PoE power, installation is simple and secure with the included vandal resistant security screws. Quickly configure each unit using the included Web interface that can be accessed from any device on the local network with an internet browser. Available in one-button, two-button and no-button configurations. *Note: Ethernet cable may only be connected through the top or bottom conduit holes for this model.*

Features:

- Dual registration (SIP and InformaCast)
- PoE 802.3af enabled (Power-over-Ethernet)
- Environmental noise suppression
- Full-duplex audio with Acoustic Echo Cancellation (AEC)
- Security screws included
- Fully configurable via webpages
- Peer-to-peer SIP capable
- IP paging speaker feature
- Mic and speaker volume control
- IP65 weather protection (conformal coated internal circuitry)

Job Name: Model Numbers: Date:

Location: Notes:

Specifications

- Ethernet: 10/100 Mbps (Can force 10Mbps full-duplex)
- Protocol: SIP RFC 3261 compatible
- Temperature Range: -40°C to +85°C
- Audio Codecs: G.711, G.726 (16/24/32/40kbps), G.722, DVI4 (narrow/HD/Ultra HD), iLBC, Speex, SILK
- Audio Sampling: Up to 48KHz
- Dimensions: 5.11" x 5.17" x 2.81" (H x W x D)
- Warranty: 2 years limited
- Regulatory Compliance: FCC Class B
- Power Input: PoE 802.3af

Model Numbers

Wahsega Labs	Intercom	Mount	InformaCast	Options	Color
WL	IC	2GANG	INF	OV	
Wahsega Labs	Intercom	2GANG = 2-Gang BK = Back FL = Flush MT = Mount	InformaCast®	O = Outdoor I = Indoor V = Vandal Resistant (Outdoor only) NB = No Buttons 2B = Two Buttons	W = White Glossy (Interior only) Blank = Gray Powdercoat

WL-IC-2GANG-INF-OV

Wahsega Labs
 Intercom
 2-Gang
 InformaCast
 Outdoor
 Vandal Resistant

WL-IC-BKMT-INF-OV

Wahsega Labs
 Intercom
 Back Mount
 InformaCast
 Outdoor
 Vandal Resistant

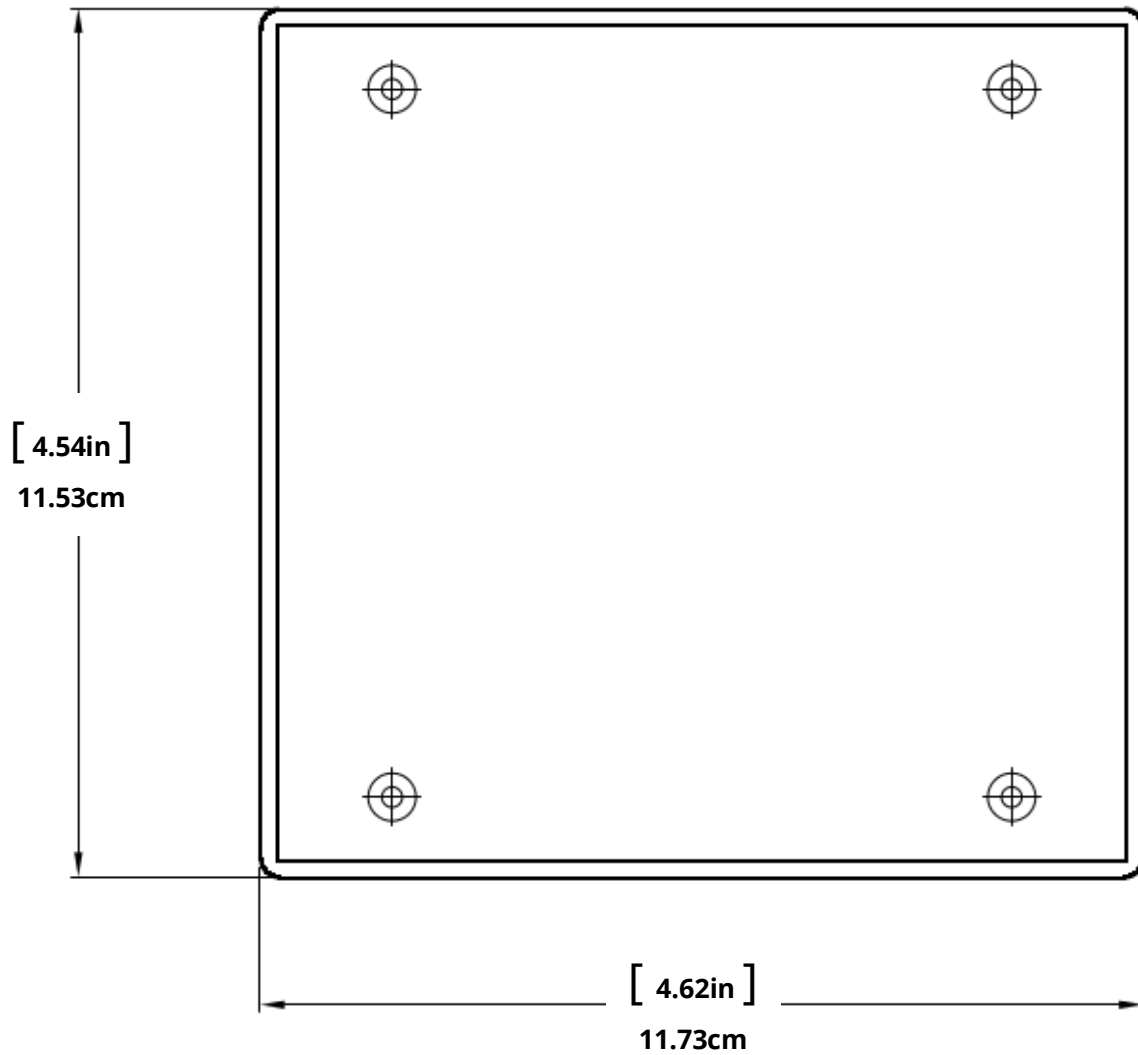
WL-IC-FLMT-INF-I-W

Wahsega Labs
 Intercom
 Flush Mount
 InformaCast
 Indoor
 White

Job Name: **Model Numbers:** **Date:**

Location: **Notes:**

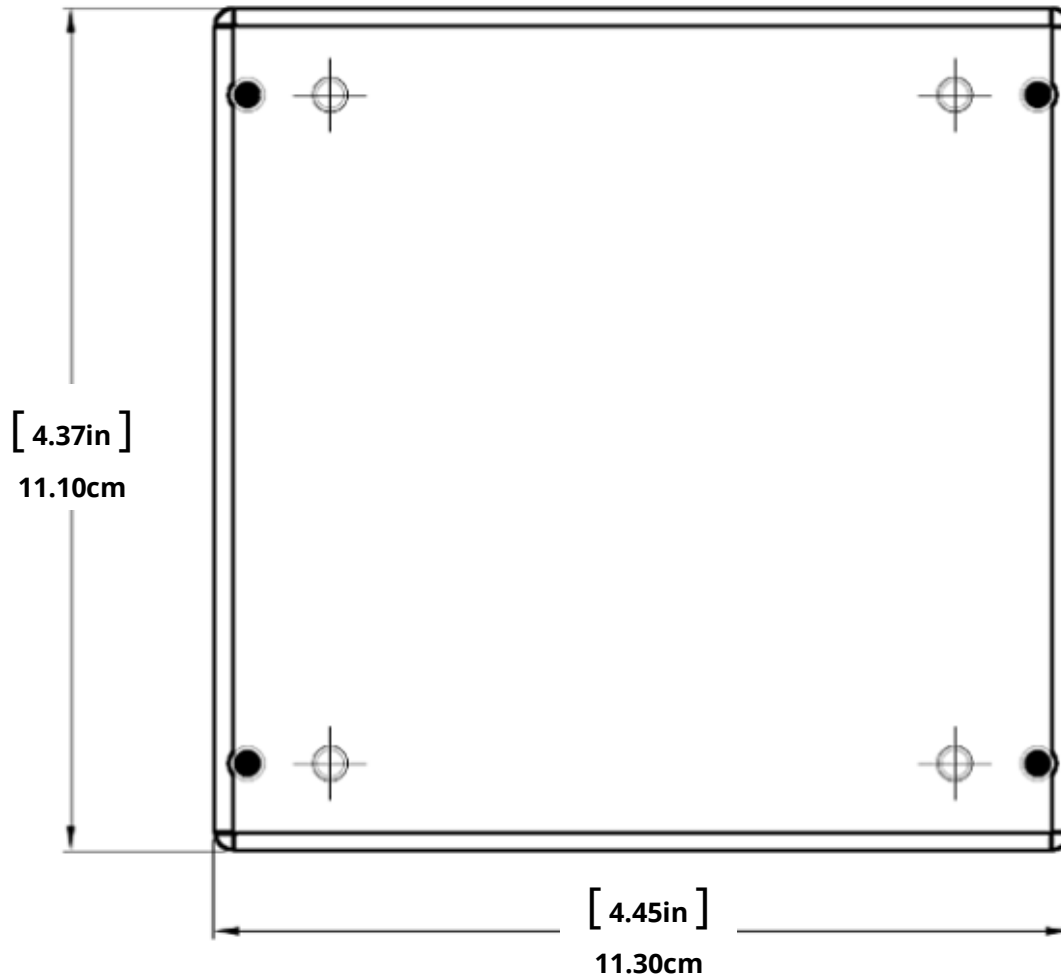
Dimensions



WL-IC-2GANG-INF-OV
Front view

Job Name: Model Numbers: Date:

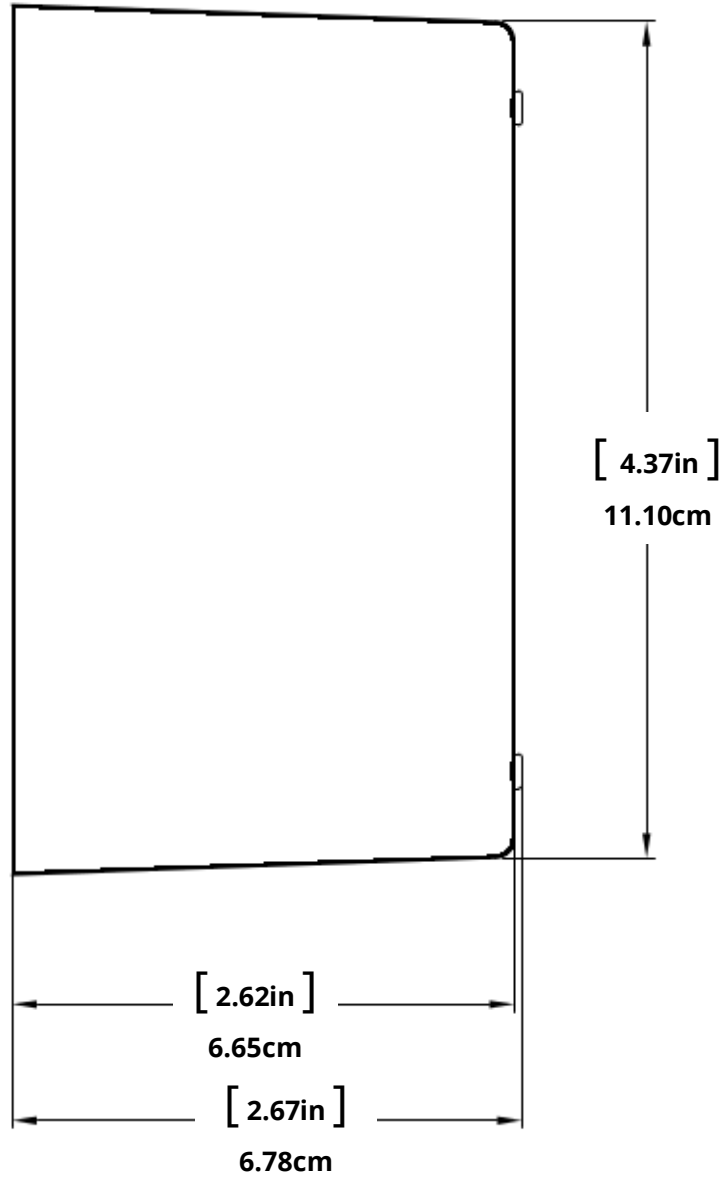
Location: Notes:



WL-IC-2GANG-INF-OV
Rear view

Job Name: Model Numbers: Date:

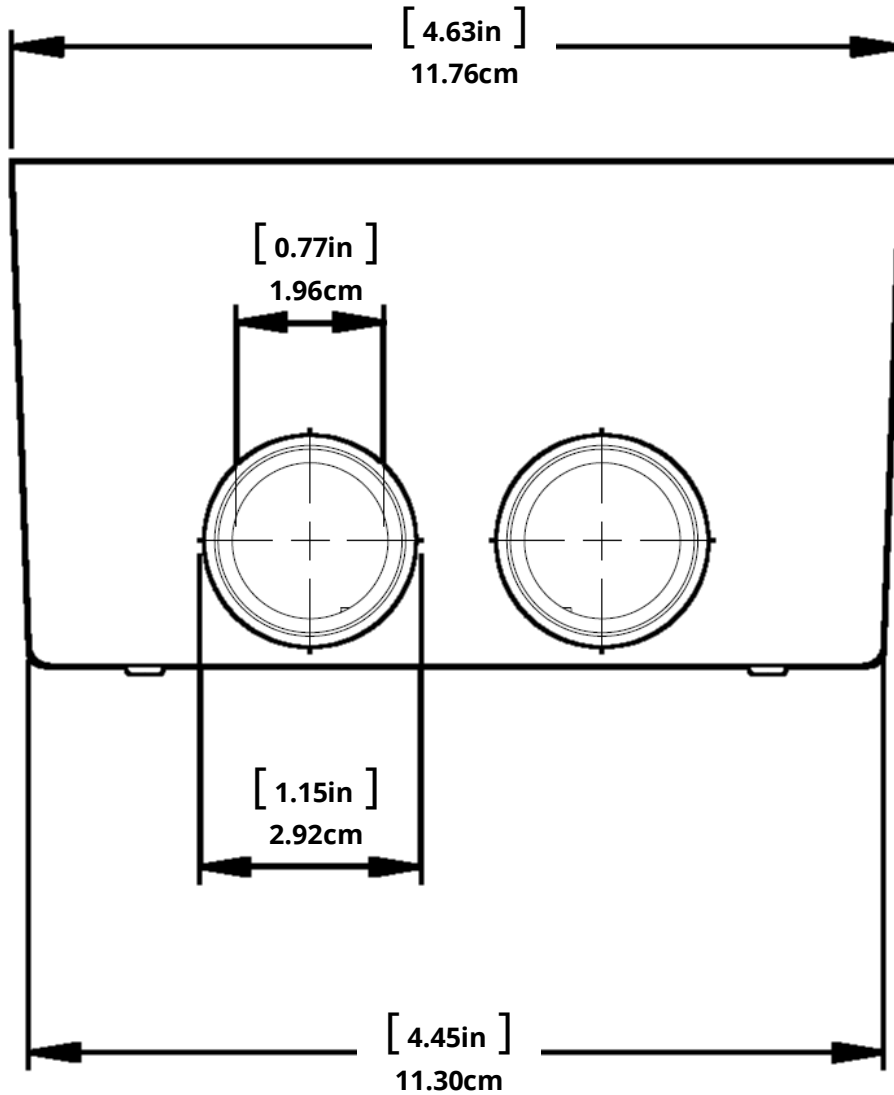
Location: Notes:



WL-IC-2GANG-INF-OV
Side view

Job Name: Model Numbers: Date:

Location: Notes:

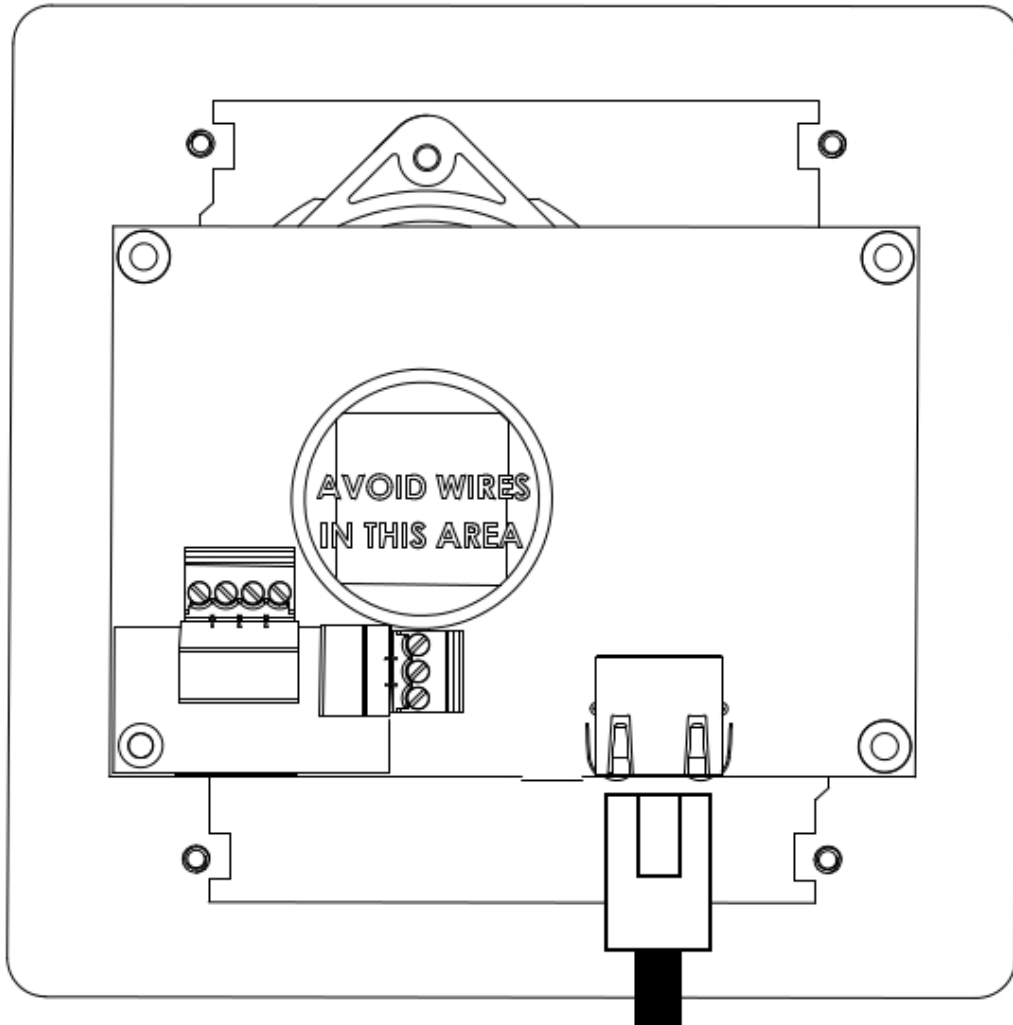


WL-IC-2GANG-INF-OV
Bottom view

Job Name: Model Numbers: Date:

Location: Notes:

Ethernet Connection



NOTE: Ethernet cable can ONLY be installed in the orientation shown.

Job Name: Model Numbers: Date:

Location: Notes: